

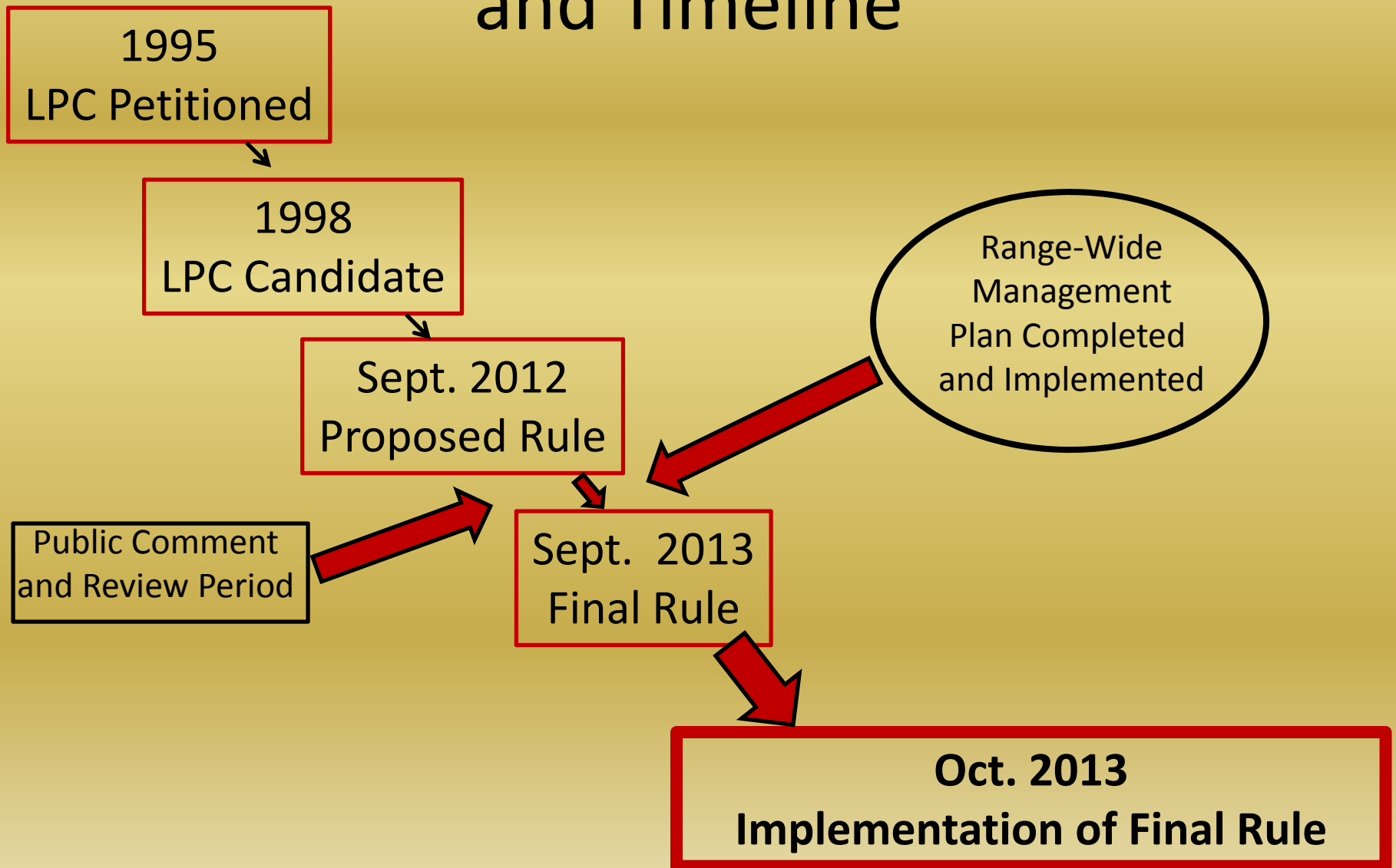
# Range-Wide Lesser Prairie-Chicken Management Plan



*Sean Kyle*

*Texas Parks and Wildlife, LPCIWG*

# Listing Process Background and Timeline

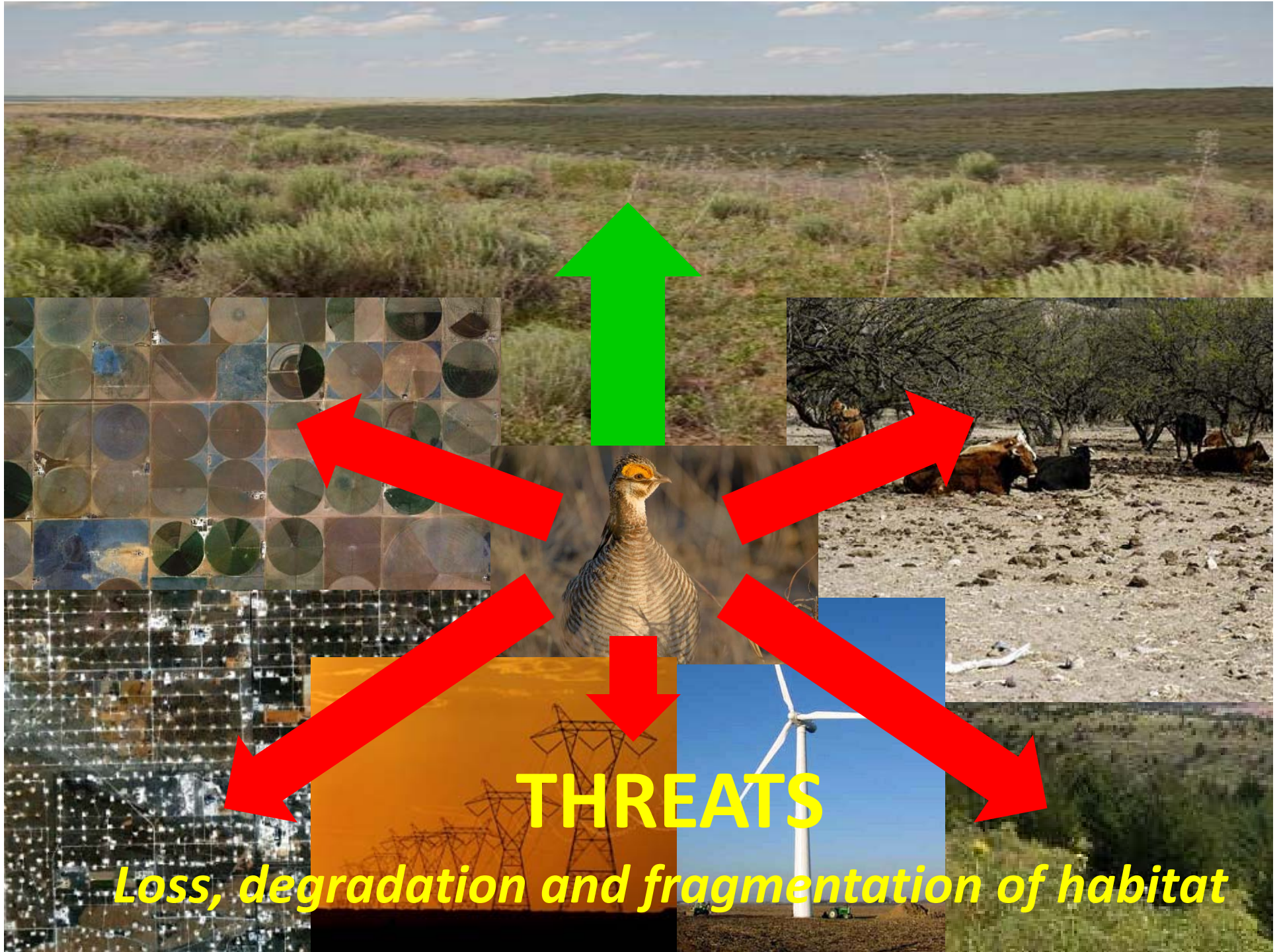


# The Range-Wide Plan

## *Big Picture and All Hands on Deck*

- Address all threats
- Coordinated and targeted conservation efforts
- Agency, landowner, and industry engagement





# THREATS

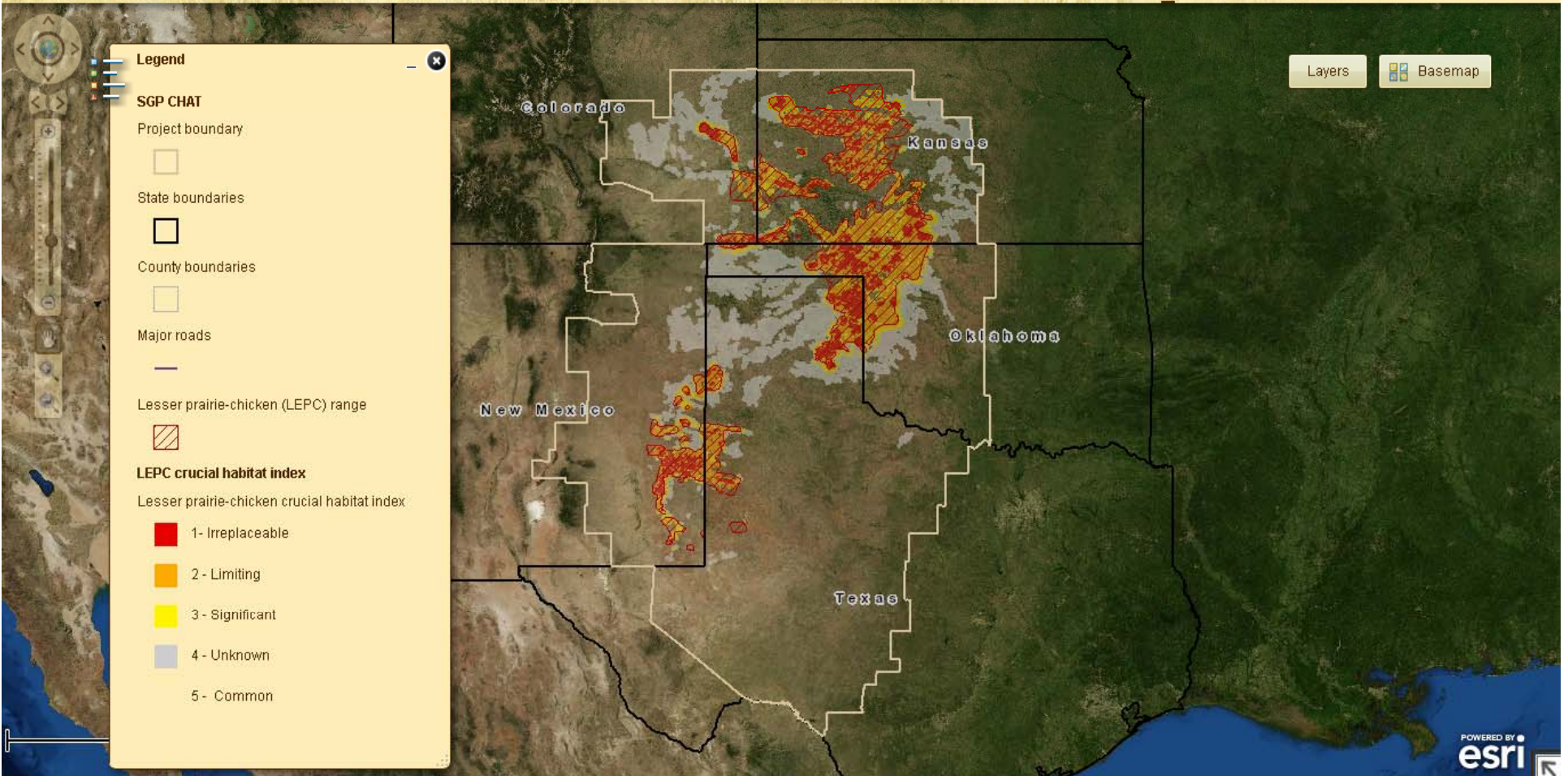
*Loss, degradation and fragmentation of habitat*

# Coordinated and Targeted Conservation Efforts



[Project Home Page](#) | [User Guide](#) | [View in ArcMap](#) | [Download Geodata](#) | [Web Service Contents](#) | [Kansas Biological Survey](#) | [Kansas Applied Remote Sensing \(KARS\)](#)

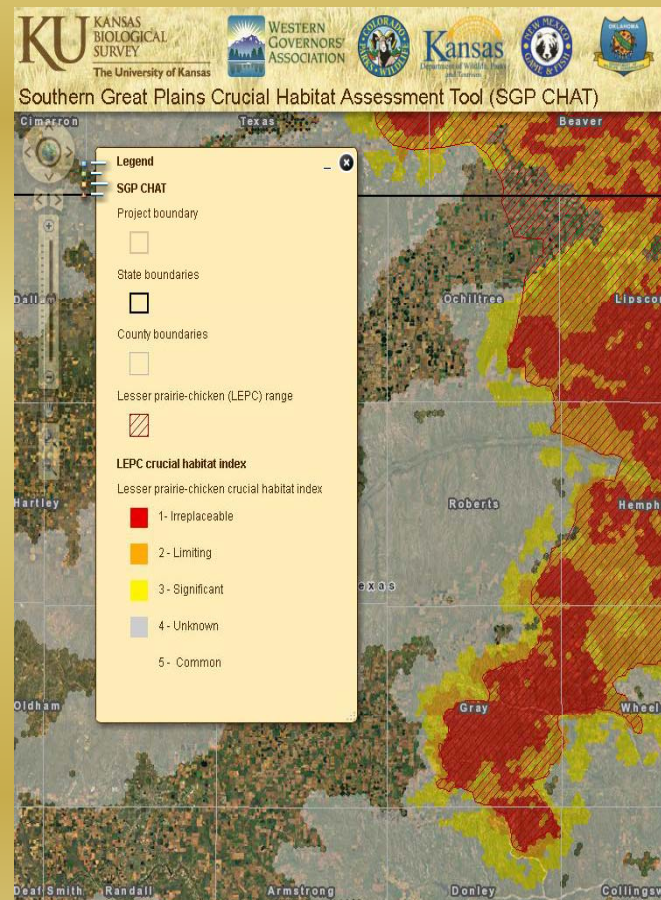
Southern Great Plains Crucial Habitat Assessment Tool (SGP CHAT)



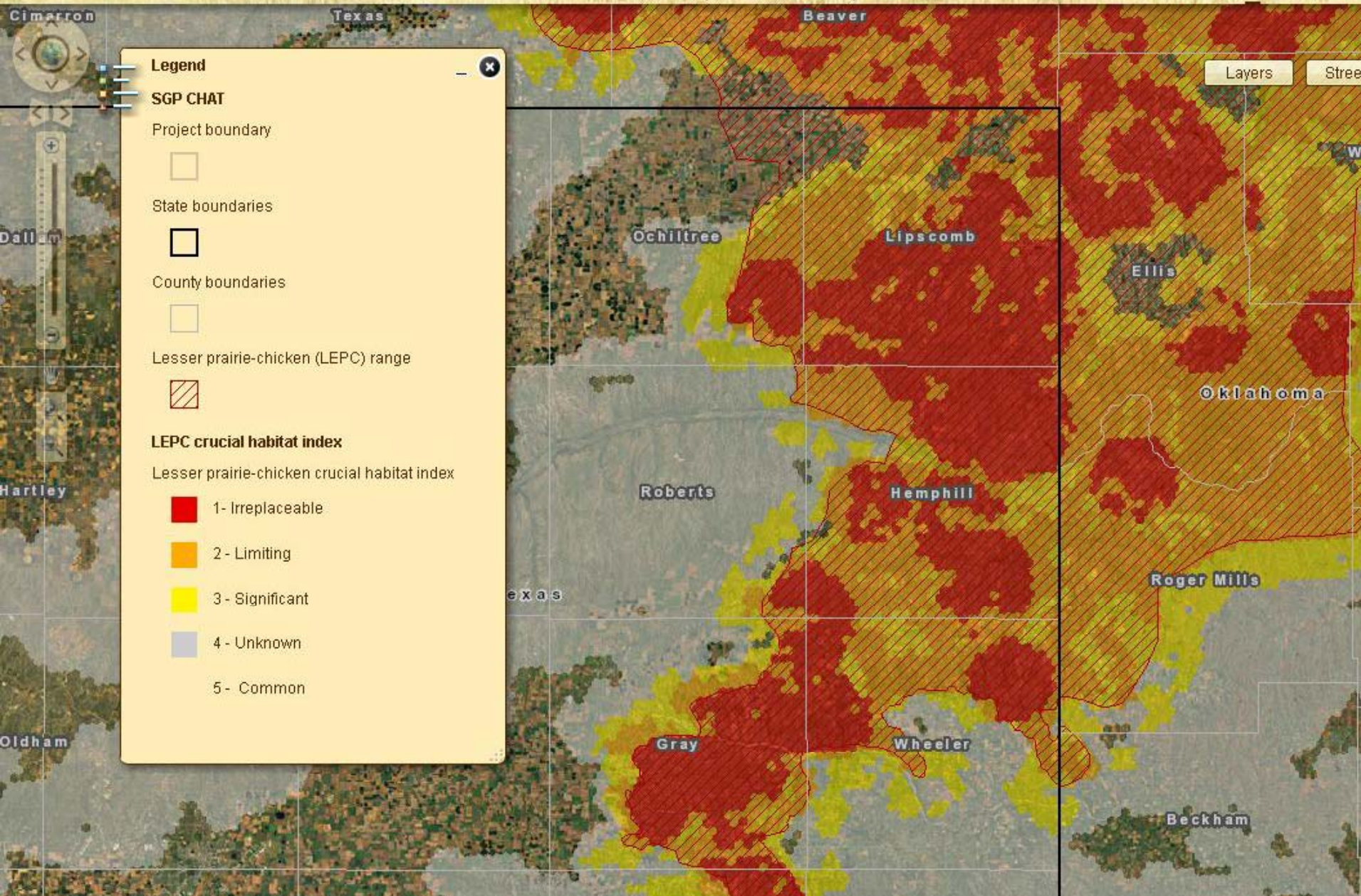
# CHAT Revision

## *What will be different?*

- Multi-species tool/stand alone LPC-CHAT
- Revised LPC habitat map
- Improved project siting tools
- Range-wide conservation targeting tools based on aerial survey grid
- Expected completion date—Fall 2012



# Southern Great Plains Crucial Habitat Assessment Tool (SGP CHAT)



# Coordinated and Targeted Conservation Efforts

- Common goals for LPC populations, leks and habitat
- Conservation focal areas (25,000-50,000 acres)
- Reducing fragmentation and improving connectivity
- “High-level of certainty” —CCAAs, HCPs, or other contractual agreements
- Range-wide monitoring efforts



# Agency Engagement

- Coordination between agencies, NGOs, and States
  - Common targeting
  - Cooperative agreements
- Capacity building
  - Personnel, funding and resources
- Monitoring
  - Range-wide aerial surveys
  - Habitat monitoring



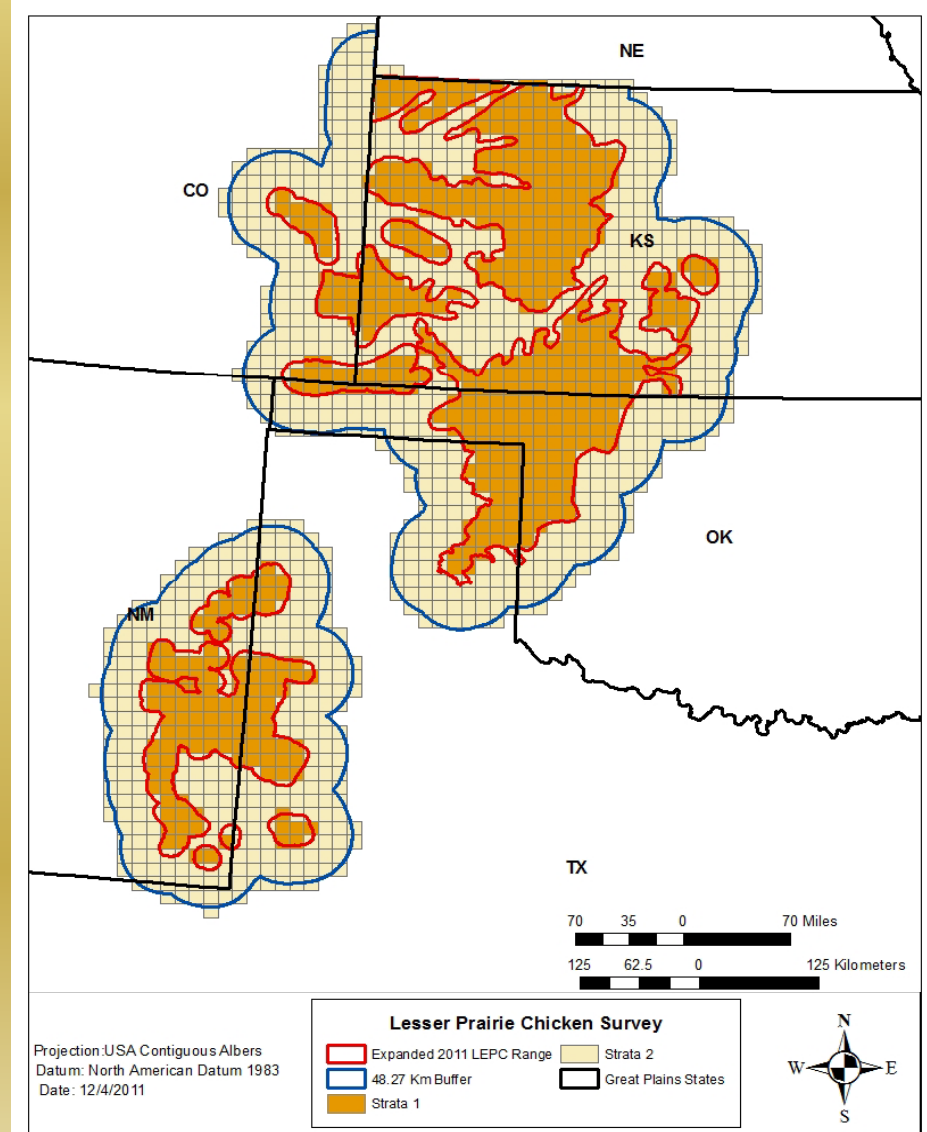
# Agency Success Stories in Texas

- TPWD--Ranching CCAA
  - More than 300,000 acres enrolled
- NRCS--LEPCI
  - \$500k in 2012 for habitat work
  - SWAT Biologists--Pheasants Forever
- FSA--SAFE/CRP
  - 78,000 acres of SAFE
  - CRP acreage stable
  - Extensive LPC use of CRP
- LPCIWG--Range-wide aerial survey



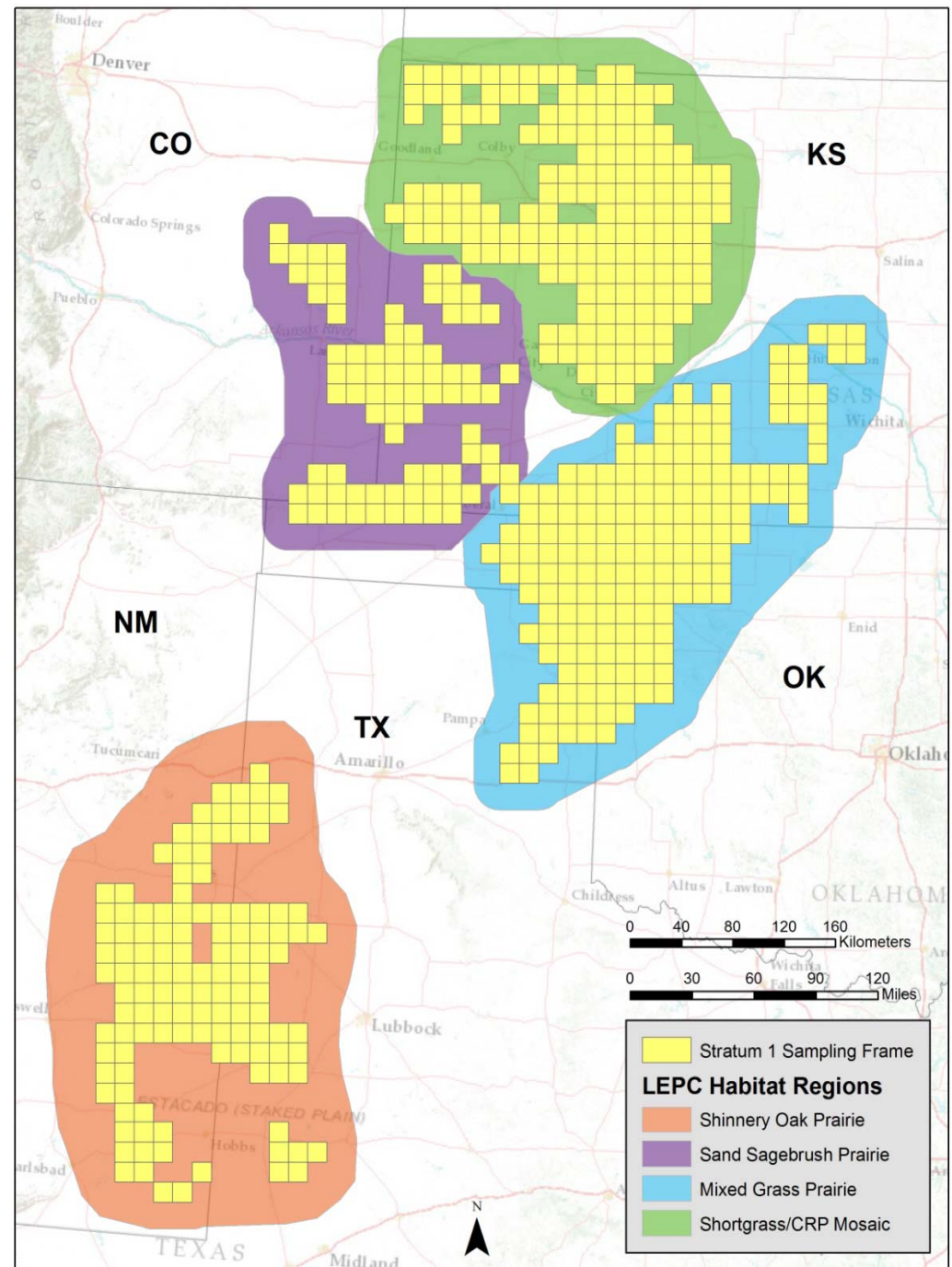
# Range-Wide Aerial Survey Design

- Randomized sampling design
- Distance sampling
- 15x15km blocks with two random transects
- Strata 1 within expanded EOR
- Strata 2 within 30 mile buffer of EOR



# Range-Wide Aerial Survey Effort

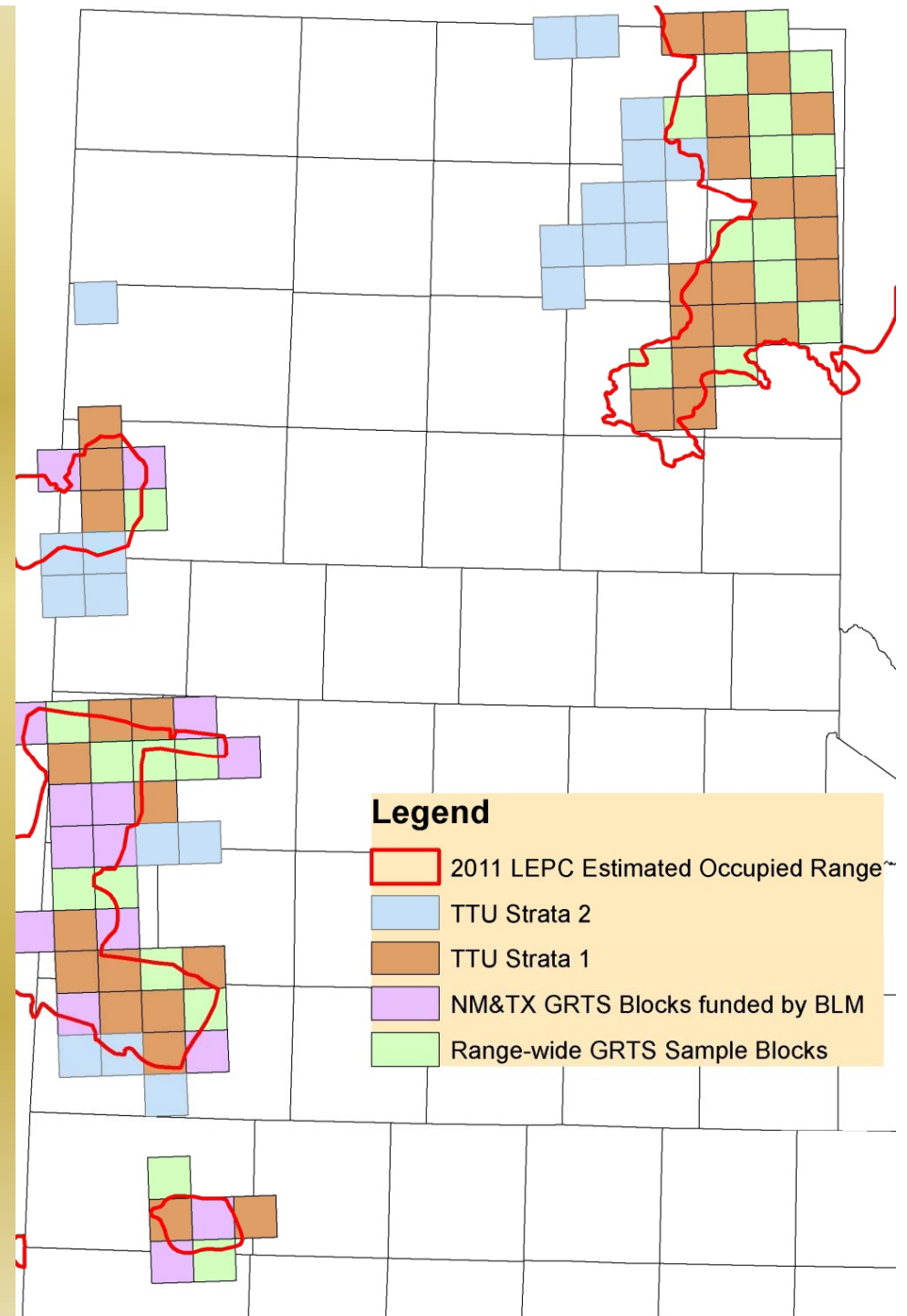
- Ecoregional density estimates for leks and birds



# Range-Wide Aerial Survey Effort

*State, Federal, and  
Private funding...*

*Final Report Expected  
Late August*



# Landowner Engagement

- Regulatory assurances--CCAAs
- Cost-share programs
- Incentive-based options



# Industry Engagement

- Avoid, minimize, and offset
- Work directly with TPWD
- CCAAs and HCPs



# Industry Efforts

- Range-wide efforts
  - Great Plains Wind HCP
  - Oil and gas industry efforts





# Range-Plan Process and Timeline

- LPCIWG leading the way
- Jon Haufler of EMRI assisting with plan development
- Science committee
- Voluntary offset/conservation banking committee
- State-based implementation committees
- Reviewers
- Outreach
  
- Expected completion date—March 2013

# How does your agency or industry plug in to the Range-Wide Plan process?

- Contact the Lesser Prairie-Chicken Interstate Working Group
- Bill Van Pelt, WAFWA Grassland Coordinator and LPCIWG POC for the Range-Wide Plan
- [bvanpelt@azgfd.gov](mailto:bvanpelt@azgfd.gov)



# TPWD Contact

- Clayton Wolf, Wildlife  
Division Director
- [Clayton.Wolf@tpwd.state.tx.us](mailto:Clayton.Wolf@tpwd.state.tx.us)
- [www.tpwd.state.tx.us](http://www.tpwd.state.tx.us)



# Questions and comments

